

The Melrose

The Avalon Collection

Engineered homes built magnificently, promptly, affordably.

Multifamily

2 Bedrooms / 1.5 Baths

(Each Unit)

39'- 5" x 13' -9" (each unit)

First Floor Square Footage: 535 s. f.

Second Floor: 535s. f.

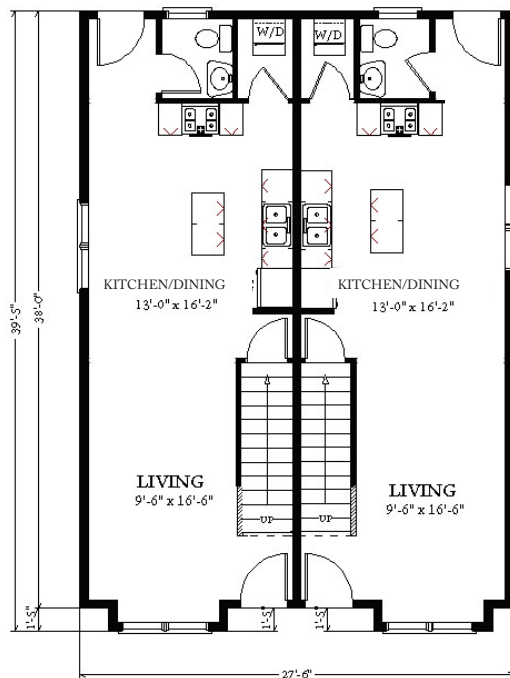
Total Square Footage For Each Unit:

1070 square feet

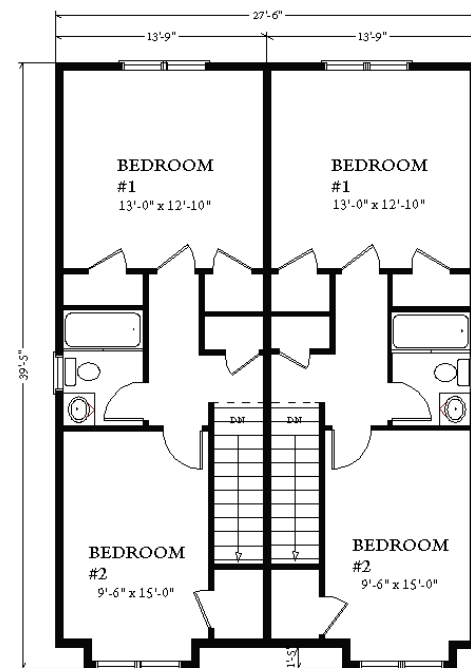
Total Square Footage: 2140



The Melrose plan is a multifamily plan which features two bedrooms in each unit. The plan contains two floors and the option to add as many units as necessary. The first floor features a wonderful open concept layout, which includes a laundry closet.



1st Floor



2nd Floor



3 Porter Street, Suit 201
Stoughton, Ma 02072
Phone: 781-344-4875
Fax: 781-341-8321

Info@avalonbuildingsystems.com
www.avalonbuildingsystems.com